

WELCOME

To

SHUBHLABH CASTING LLP

A Foundry for Accuracy, Precision & Quality Castings.

Hitech Cast that lasts

SLC at a Glance

Shubhlabh Casting LLP is a State-of-the-Art High Pressure Molding Line Foundry, strategically located in the Industrial hub of Sanand Ahmedabad, Gujrat.

The infrastructure at SLC includes one of world's best equipment comprising of HPML from Sinto, Japan, Sand Plant from Eirich, Germany and Induction Furnaces from Inductotherm. SLC's strength is in optimizing design of tooling layout and relentless pursuit towards excellence to achieve specified metallurgy. SLC's strength is derived from a technical team that comes with a pedigree of experienced and professional Technocrats from engineering, manufacturing, and technical backgrounds.

SLC plans to achieve its Objectives by way of a Joint Venture with a renowned company RWP, a company known the world over in the field of Foundry and peripherals. Leveraging on this JV, SLC plans to specialize in producing special castings for various applications.

Management Team

Mr. Jitendra Patel from Royale Touche Group, a very Senior Successful Business Magnate and Mentor with a vast business experience of more than 3 decades in different businesses.

Mr. Rankit Thakkar from Esquire Group, a very successful businessman and an astute Leader with a vast business experience of more than 2 decades

Mr. Dipak Thakkar from Esquire Group, also a very successful and enterprising business Entrepreneur with a vast business experience of more than 2 decades

Mr. Bharat Thakkar, a Technical Advisor with 40 years experience in foundry industry

Our Vision

To ensure maximum value addition to our customers' business by supplying quality castings on time using high end technology

To provide alternate solutions in metals and processes

This approach will have focus on customer's productivity and profitability with accuracy and precision

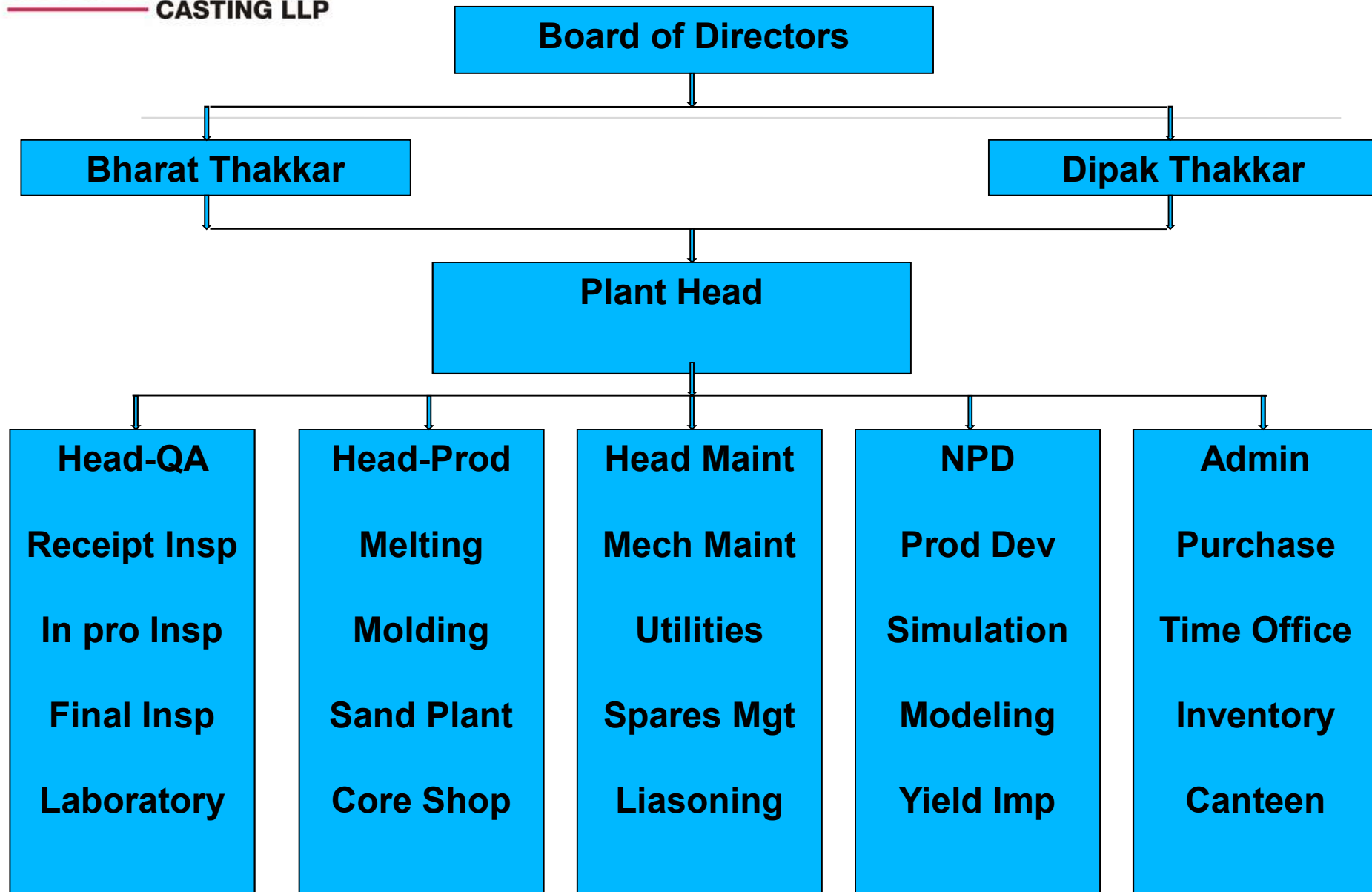
Joint Venture with RWP-CT !

SLC goes Global !

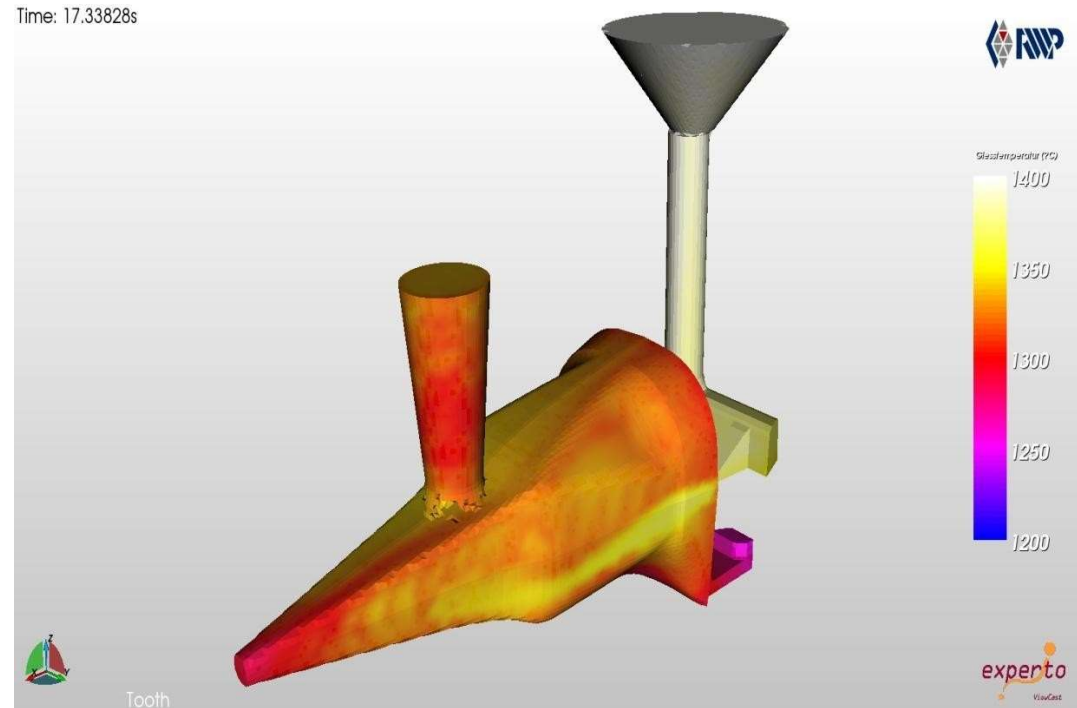


SLC has a Joint Venture with a German Company RWP

Founded in 1984 by Dr. Konrad Weiss, RWP's business has expanded to a global scale. RWP has footprints in the United States, China, Russia, Spain, Czech Republic, Belgium, South Korea, India and other countries. Besides operating its own Foundry, RWP is also in the Casting technology related advisory services in which solutions are provided by a professional, experienced team of experts. RWP also offers solutions through simulation of casting, welding and heat treatment process, through its own simulation software WinCast. Dr. Weiss has to his name a few patents for products & processes.

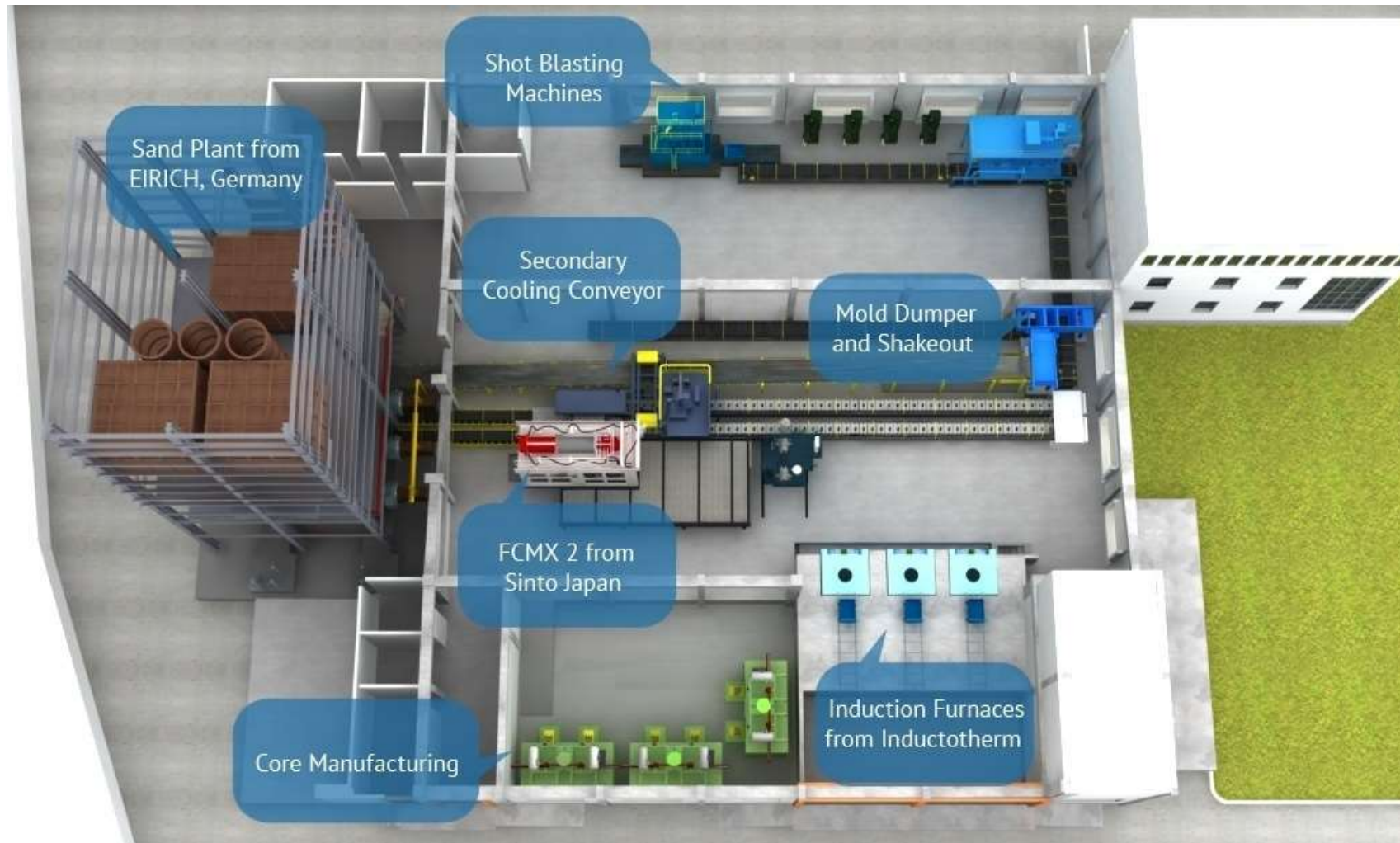


WINCAST, a Gating Simulation software developed by RWP Germany is a powerful tool to optimize gating design, understand the pouring rates and temperatures, the cooling rates and temperature, possible defect etc.



SLC is using WINCAST to simulate and design gating / runner / riser system

Plant Layout



Infrastructure



Infrastructure

High Pressure Moulding Line (HPML) from Sinto Japan

- **High Pressure Molding Machine with horizontal parting**
- **Flask less mold: Cake size: 508 x 610 x 400 mm (cope & drag)**
- **Prod rate: 200 molds / hr with 2 cores**
- **Castings weight from: 1 - 25 Kgs.**
- **The bunch weight ranges from 30 - 35 kg**



The Benefits include Uniformity & High density moulds, Rapid core setting, Reduced finishing time, Quick pattern changes and Consistent repeatability

Benefits of HPML to Customers

Good Product consistency

Relatively lower draft angle leading to weight optimization

Relatively lower machining allowances required

Higher productivity

Heterogeneous metal composition due to controlled pouring (auto pour)

Automated processes leading to lesser dependence on manual labor

High Pressure Molding Line offers better mold surface finish

Quick pattern changing

Infrastructure

Sand Plant from EIRICH, Germany

- *Model RV 19*
- *40 Tons sand mixing per hour*
- *Sand Batch mixing time: 2 minutes*
- *Sand cooler from EIRICH, China*
- *Dust Extraction in pipeline*



*Advantages: Consistent sand quality,
and good surface Finish*

Infrastructure

Induction Furnaces

- *Tri-track 2 Tons each furnaces from Inductotherm 2 for melting / 1 for holding*
- *Melting capacity - 4-6 Tons per hour*
- *1.5 Tons Auto pour Tundish with live sensing; bottom pouring system*
- *Fume extraction system for controlling pollution in plant.*



Infrastructure

Core Manufacturing

*Double station cold box m/c
(Span):*

- **Model: CB HP 600-2**
Horizontal Parting
- **Maximum size of Core Box:**
600 x 450mm
- **Maximum core weight: 16 kg**
- **Capacity for cold box : 2800**
kg per day



Shell Core machine (Navdis):

- **Horizontal parting with Heater plate size 500 x 500 mm, Model: FAVB -4,**
- **Maximum core weight: 15 Kg**
- **Core baking Oven**

Infrastructure

- *Secondary Cooling Conveyor*
- *Mold dumper and Shakeout*
- *Wire mesh & Hanger type shot blasting m/c*
- *Bunch of Grinding & polishing M/c*
- *Fork lift for material handling*
- *Pattern storage racks*



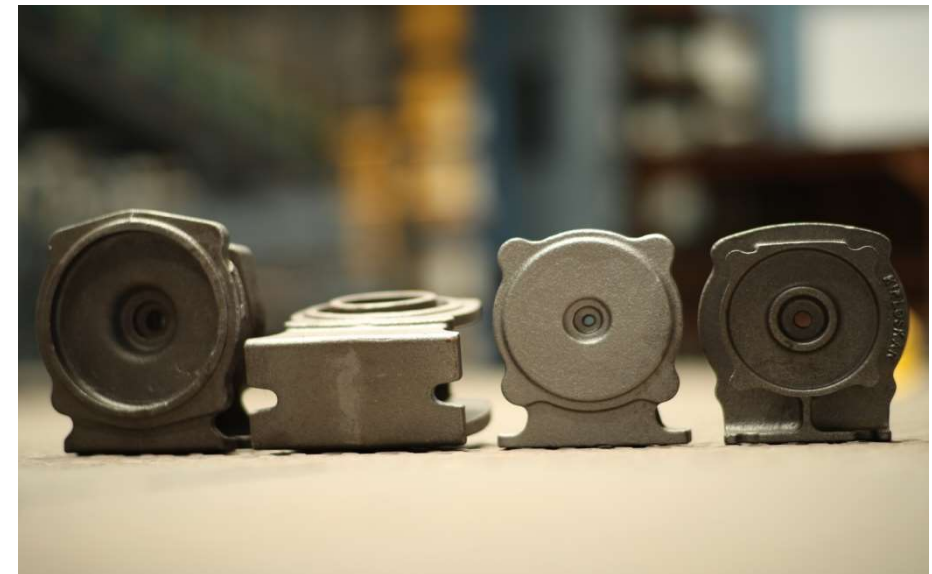
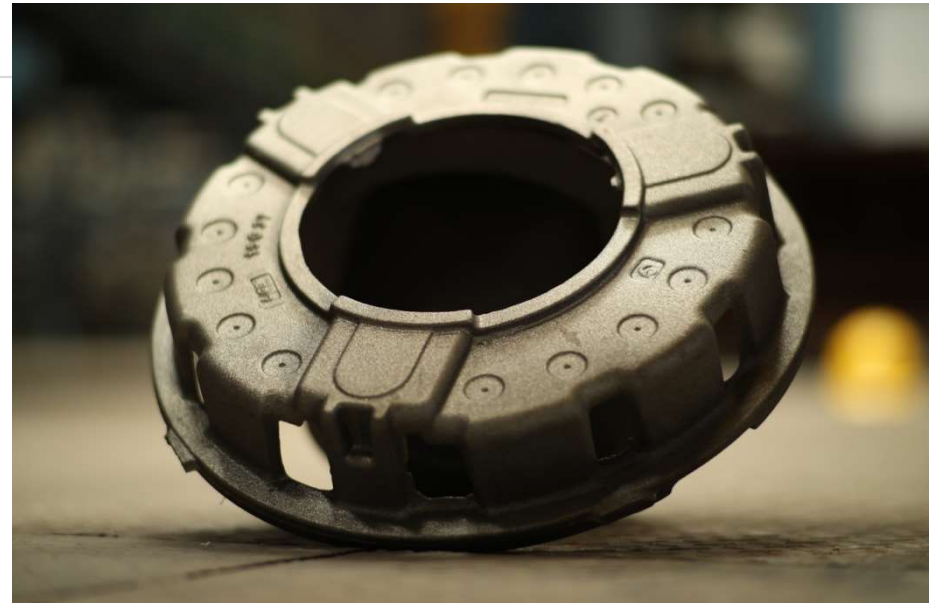
Infrastructure

Supporting Infrastructure

- *400 KVA Generator from Kirloskars has been installed as back up*
- *Compressor from Atlas Copco*
- *Transformer from T & R*
- *Cooling tower, DM Plant*
- *Autopour Tundish*
- *EOTs*



Autopour







Product Pictures



Quality Infrastructure

Quality Assurance

- *Spectrometer from Shimadzu*
- *Metallurgical Microscope with Image Analyzer*
- *Core Hardness Tester*
- *Mould Hardness Tester*
- *Universal Strength Machine*
- *Electric Oven*
- *Hydrometer*
- *Barometer*
- *Carbon Sulphur Apparatus*
- *Universal Testing Machine*
- *Hardness Testing Machine*
- *Sand Muller*
- *Sieve Shaker with Sieve Test*
- *Clay Washer*
- *Compactibility Tester*
- *Rammer Base Block*
- *Sand Rammer*

In-house tool room facility

Machines and other facilities available

- *Radial Drilling Machine*
- *Conventional Lathe*
- *Shaping Machine*
- *Height gauge*
 - *Vernier*
 - *Slip gauges*

Proof Machined Castings can also be supplied if required

Machining facility

We have in our supply chain, capable machining vendors at Ahmedabad, Pune (Maharashtra) and at Dewas (Madhya Pradesh)

We are confident that we would be able to feed (on daily / Weekly basis) these vendors with castings from our Sanand plant so that they in turn can supply machined parts to your assembly operations.

Quality Infrastructure



We produce

CI Castings grades:

FG 150

FG 200

FG 220

FG 250

FG 260

SLC can cast following grades					
Country	Standard	Grades of Grey Cast Iron			
ISO	ISO 185	150	200	250	300
India	IS 210	FG 150	FG 200	FG 250	FG 300
USA	ASTM A 48	No 20 / No 25	No 30	No 35	No 40 / No 45
Germany	DIN 1691	GG 15	GG 20	GG 25	GG 30
Europe	EN 1561	EN GJL 150	EN GJL 200	EN GJL 250	EN GJL 300
Japan	JIS G 5501	FC 150	FC 200	FC 250	FC 300
UK	BS 1452	150	200	250	300

SG Castings grades:

Ferritic

Pearlitic

400 / 12

550 / 6

400 / 15

500 / 7

400 / 18

600 / 3

700 / 2

Country	Standard	Grades of Ductile Iron / SG Iron				
ISO	ISO 1083	400 / 15	450 / 10	500 / 7	600 / 3	700 / 2
India	IS 1865	SG 370 / 17	SG 400 / 12	SG 500 / 7	SG 600 / 3	SG 700 / 2
USA	ASTM A 536	60-40-18	65-45-12/60-42-10	70-50-05	80-55-06 80-60-03	100-70-03
Germany	DIN 1693	GGG – 40	-	GGG – 50	GGG – 60	GGG – 70
Europe	EN 1563	EN GJS 400-15	EN GJS 450-10	EN GJS 500-7	EN GJS 600-3	EN GJS 700-2
Japan	JIS G 5502	FCD 400	FCD 450	FCD 500	FCD 600	FCD 700
UK	BS 2789	400 / 17	420 / 12	500 / 7	600 / 7	700 / 2

We can replace metal with a suitable economic substitute and also replace the process using our own technology

Certifications

***SLC's Quality Management Systems
are certified under***

***IATF 16949: 2016 & ISO 9001 by TUV
SUD, the renowned Certification
Body.***

***SLC is also in the process of getting
the RDSO approval which will
Enable SLC to supply castings to
various Metros and Indian Railways***



ZERTIFIKAT ♦ CERTIFICATE ♦ CERTIFICADO ♦ CERTIFICAT



CERTIFICATE

The Certification Body
of TÜV SÜD Management Service GmbH
certifies that

Shubhlabh Casting LLP
Plot No.6, Survey No. 254/1,
Opp. Chharodi Railway Station, Taluko: Sanand,
District Ahmedabad - 382170, Gujarat
India

has established and applies
a Quality Management System for

**Manufacturing of Spheroidal Graphite Cast Iron Castings &
Machining of Components**
(without Product Design as per Chapter 8.3).

An audit was performed and has furnished proof
that the requirements according to

IATF 16949
First Edition 2016-10-01

are fulfilled.

Issue date: 2021-01-21

Expiry date: 2024-01-20

Certificate Registration No.: 12 111 58493 TMS

IATF Certificate No.: 0382654

Head of Certification Body
Munich, 2021-01-27

Page 1 of 1

TÜV SÜD Management Service GmbH • Zertifizierungsstelle • Röhrenstrasse 57 • 80339 München • Germany
www.tuv-sud.de/certificate-validity-check

TUV®

ZERTIFIKAT ♦ CERTIFICATE ♦ CERTIFICADO ♦ CERTIFICAT



CERTIFICATE

The Certification Body
of TÜV SÜD South Asia Private Limited
certifies that

Shubhlabh Casting LLP
Plot No.6, Survey No. 254/1, Opp. Chharodi Railway Station,
Taluko: Sanand, District Ahmedabad - 382 170, Gujarat, INDIA

has implemented a Quality Management System
in accordance with ISO 9001:2015
For Scope of

**MANUFACTURING OF SGCI INSERTS, CAST IRON, SPHEROIDAL
GRAPHITE CAST IRON CASTINGS & MACHINING OF COMPONENTS.**

The certificate is valid From 2021-01-21 until 2024-01-20

Subject to successful completion of annual periodic audits

The present status of the Certificate can be obtained on www.tuv-sud.com/india

Further clarifications regarding the scope of this certificate may be obtained by consulting the certification body

Certificate Registration No. 99 100 20206

Date of initial certification: 2019-08-22

Issue Date: 2021-02-03

Rahul Kedia
Head of Certification Body
of TÜV SÜD South Asia Private Limited, Mumbai
Member of TÜV SÜD Group



TÜV SÜD South Asia Pvt. Ltd. • TÜV SÜD House • Sector 19 • Gurgaon (Gurgaon) • India • 200072 • Maharashtra • India

TUV®

Products

SLC has been successful in developing and supplying a wide range of parts including

Automotive Parts

Valves Parts

Electric Motor Parts

Engineering Parts

Railway Inserts

Under Development are special products like...

Dredging machine wear parts

Earth Excavators Parts

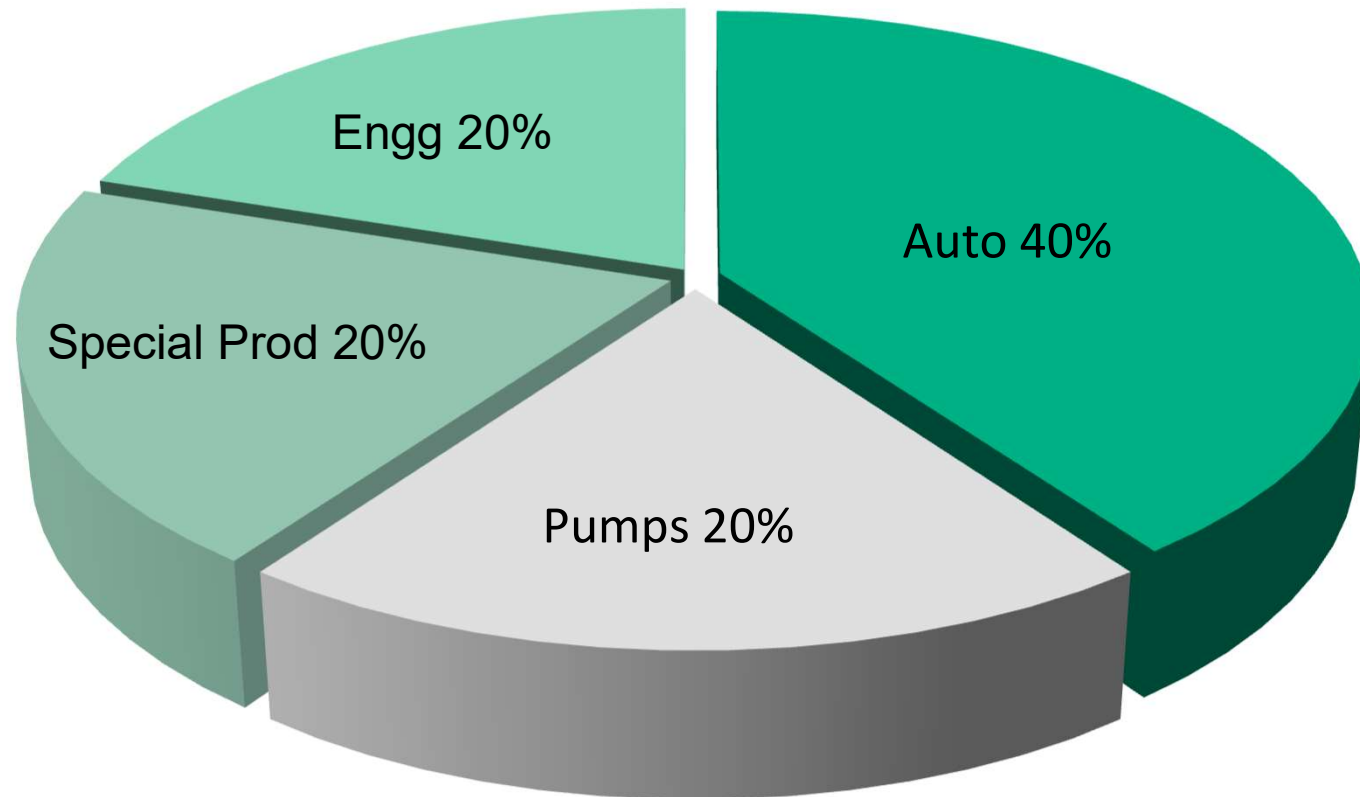
Electric Insulator caps

We can replace metal with a suitable economic substitute and also replace the process using our own technology

Our valuable Clientele.....

- | | |
|--|--------------------------------|
| • <i>Setco Automotive Ltd.</i> | <i>Automobile Parts</i> |
| • <i>La Gajjar Machinery Pvt.Ltd.</i> | <i>Pumps Parts</i> |
| • <i>Insulators and Electrical Company</i> | <i>Insulators Parts</i> |
| • <i>Saravana Global Energy Ltd.</i> | <i>Insulators Parts</i> |
| • <i>Bajaj Steel Industries Ltd.</i> | <i>Automobile Parts</i> |
| • <i>Jamna Auto Industries Ltd.</i> | <i>Automobile Parts</i> |
| • <i>Emerson Copland Ltd.</i> | <i>Compressor Parts</i> |
| • <i>Kotecha Steel forge and Cast Ind. P. Ltd</i> | <i>Solar Parts</i> |
| • <i>Star Auto Pvt.Ltd.</i> | <i>Automobile Parts</i> |
| • <i>Micron Instruments Pvt.Ltd.</i> | <i>Defense Part</i> |
| • <i>Crompton Greaves Ltd.</i> | <i>Pumps Parts</i> |
| • <i>PMB VDL</i> | <i>Machine Parts</i> |

SLC's market Focus



Current scenario and the way ahead

- *Foundry specific web based ERP being to be installed*
- *Currently we outsource pattern making to capable vendors in our supply chain*
- *In house Machining set up is under development which will cater to pattern making and pattern repair as required by our Customers*
- *Expansion plan: Machining center with horizontal and vertical turning centers*

The SLC promise

***“Quality, Cost Competitiveness, Delivery and Development
is our Cast Iron guarantee”***

THANK YOU

SHUBHLABH CASTING LLP

SHUBHLABH CASTING LLP

Hitech Cast that last

Factory: Plot No 6, 251/1
Opp. Chharodi Rly Station,
Sanand – Viramgam Highway,
Sanand Ahmedabad – 382170 Gujarat (INDIA)
Contact: +91 2717 273505 / +91 9909990040

Office: 308 - Shiromani Complex, Opp. Ocean Park,
Near Nehrunagar Cross Road, Satellite,
Ahmedabad – 380015 Gujarat(INDIA)
Contact: +79 26767616 / +91 9909990077

Email : info@shubhlabhcast.com